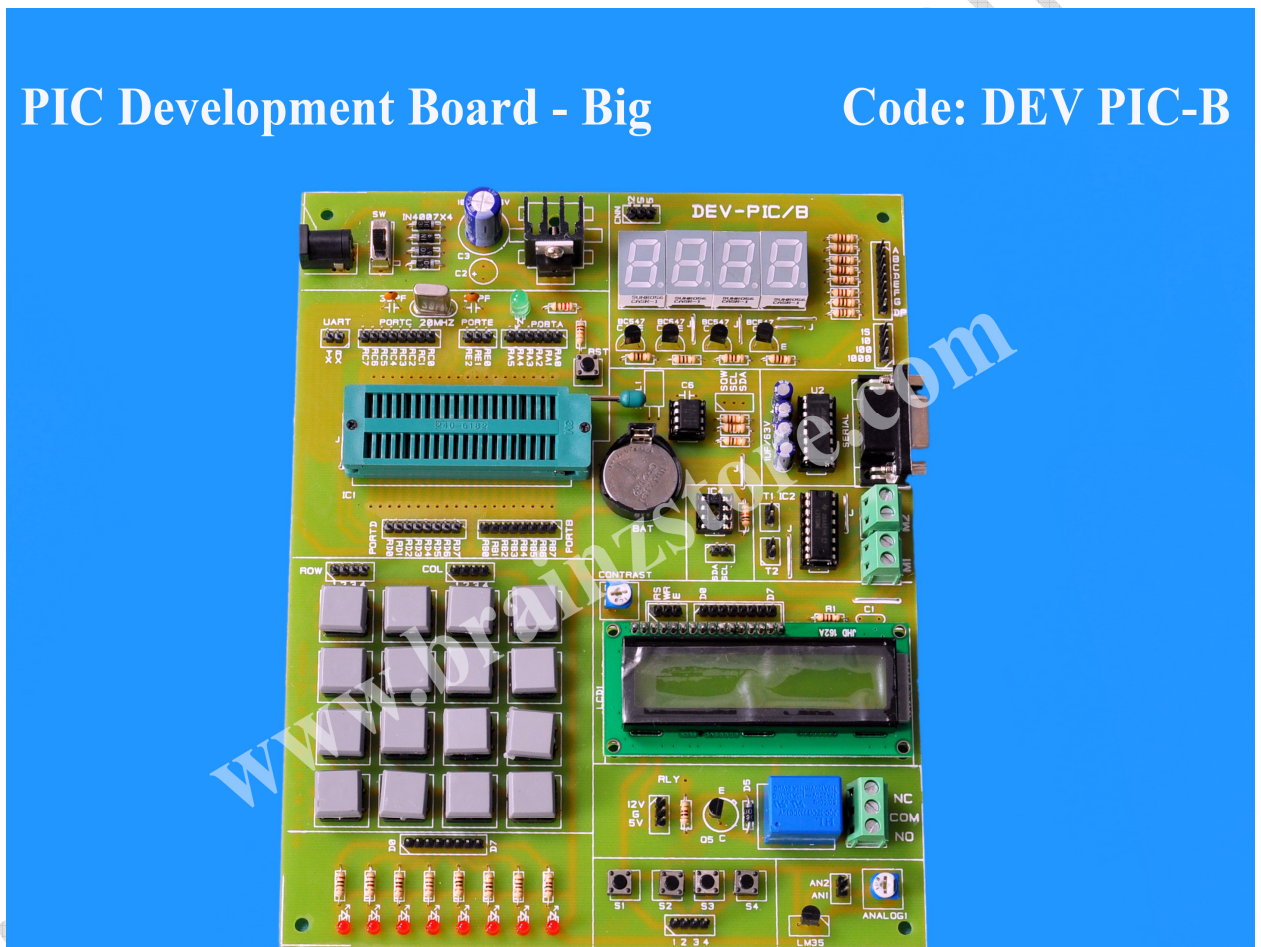


This **PIC Development Board** provides an easy and low cost way to develop projects on 40 Pin PIC Micro Controller



Features

- PIC Development Board for Microchip PIC Series (EX 16F877 - 40 pin)
- During Testing Easy to Remove Chips with ZIP Socket
- On board Regulated Power- Optional Supply 5v,12v supply
- Easy to test with Burg Connectors wires

- RS232 Serial Port
- 4 Digit -7Seg Multiplexed Display
- DC Power Supply Connector(12v Ac or Dc)
- Inbuilt LCD display 2line x 16Character
- 24Cxx I2C EEPROM
- RTC DS1307 with Battery
- 8 LED array
- 4*4 Matrix Key Pad
- 4 Interrupt Switches
- L293D DC Motor Driver
- 12V/7A Relay circuit
- LM35 based Temperature Sensor
- Potentiometer for Analog Input
- 20Mhz Crystal

Package Contents

- PIC Development Board
- Software CD (Data sheets, Example Programs, Schematic)

Note: Price of the board doesn't include price of microcontroller and power Adapter. You may order the required Microcontroller and power Adapter Separately.

www.brainzstore.com